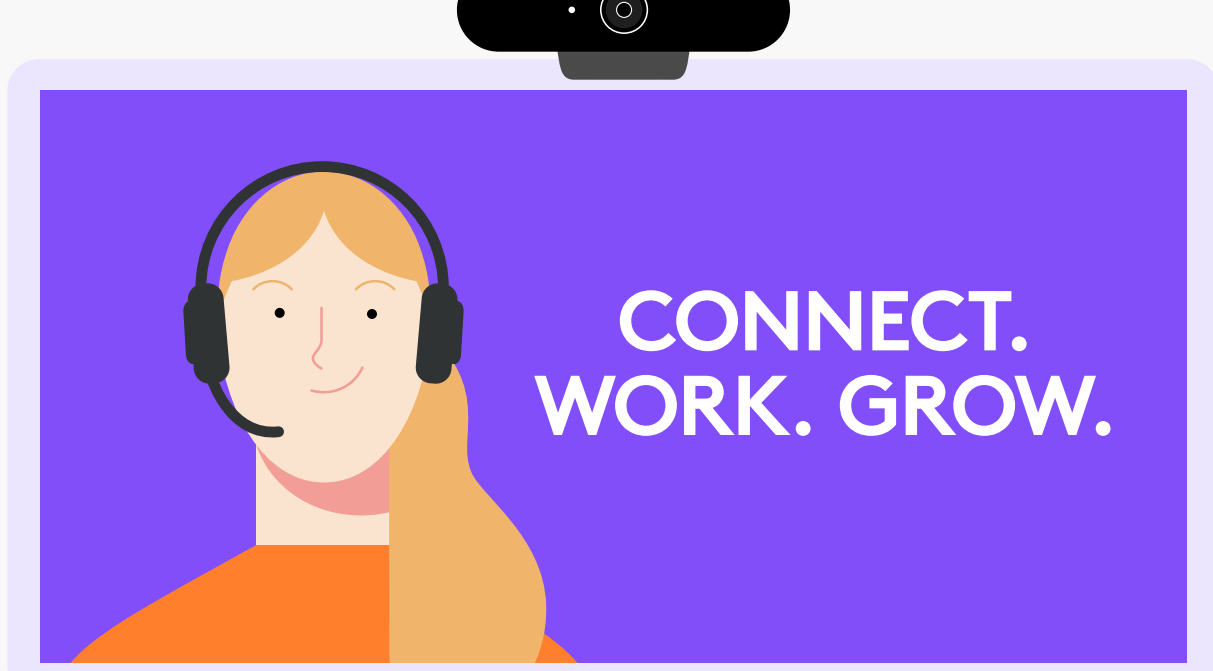


# HELP YOUR ORGANIZATION DISCOVER THE VALUE OF FOCUS WITH LOGITECH PERSONAL COLLABORATION SOLUTIONS

These days it can be hard to focus. The benefits of choosing how and where we work can also bring distractions if staff aren't properly engaged. Providing them with the right equipment allows them to connect and collaborate effectively, reducing the need for troubleshooting as a result of technical difficulties. Here's how to boost business focus with Logitech Personal Collaboration.



## MEETINGS IN FOCUS

**76%** of employees are now using video conferencing for remote work, so **equipment that's easy to set up and operate** is a clear priority for businesses.

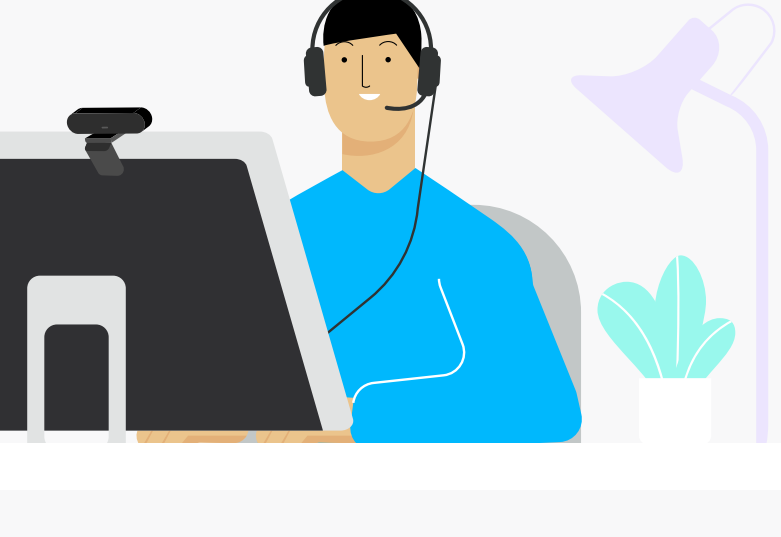


The **Brio Ultra HD Pro Business** Webcam with dual connection, noise-cancelling mics and razor-sharp optics guarantees **a seamless meeting experience**.



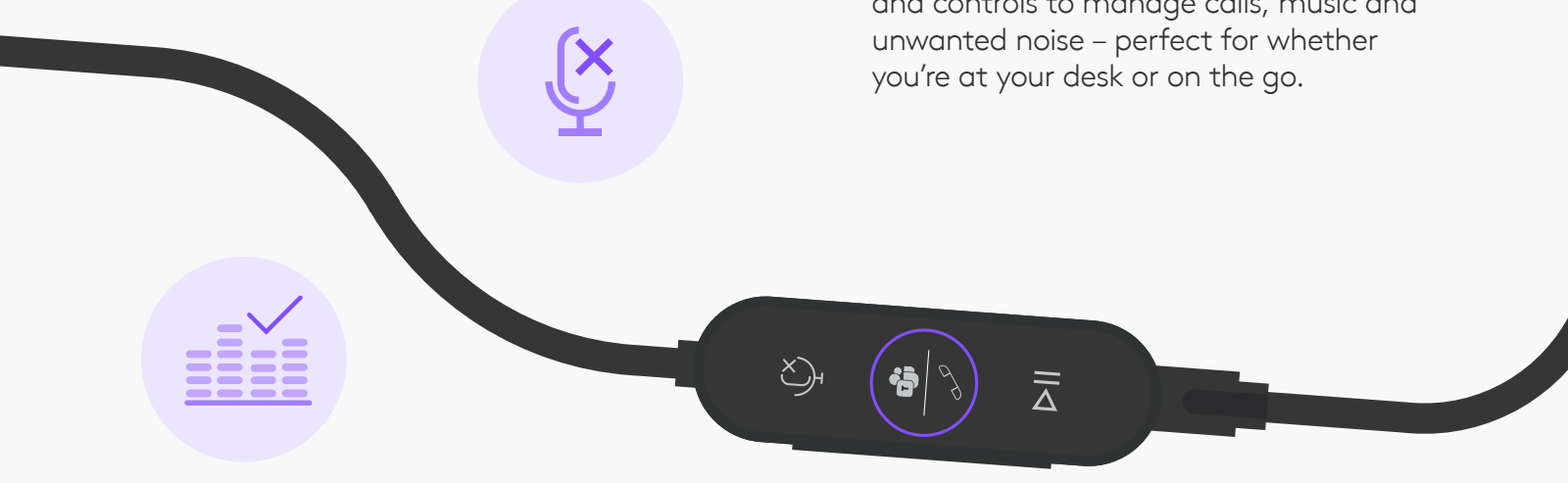
Connect to everything with **Logi Dock**, a five-port docking station with one-touch meeting control and speakerphone, all in one tidy unit that **cuts desktop clutter**.

## TECH-EMPOWERED EMPLOYEES



**83%** of people now want to work under a hybrid model, which means supplying staff with tools to match their specific needs.

**Zone Wireless** and **Zone Wired Headsets** come with multiple connection types and controls to manage calls, music and unwanted noise – perfect for whether you're at your desk or on the go.



## PERSONALIZATION IN ACTION

When you enable your staff to take personal collaboration tools into their own hands, you **ease support strain on the business**.

**Zone Wired** and **Zone True Wireless Earbuds** pair with Logi Tune for ultimate customization and control, from sidetone adjustment to 5-band EQ calibration, and much more.



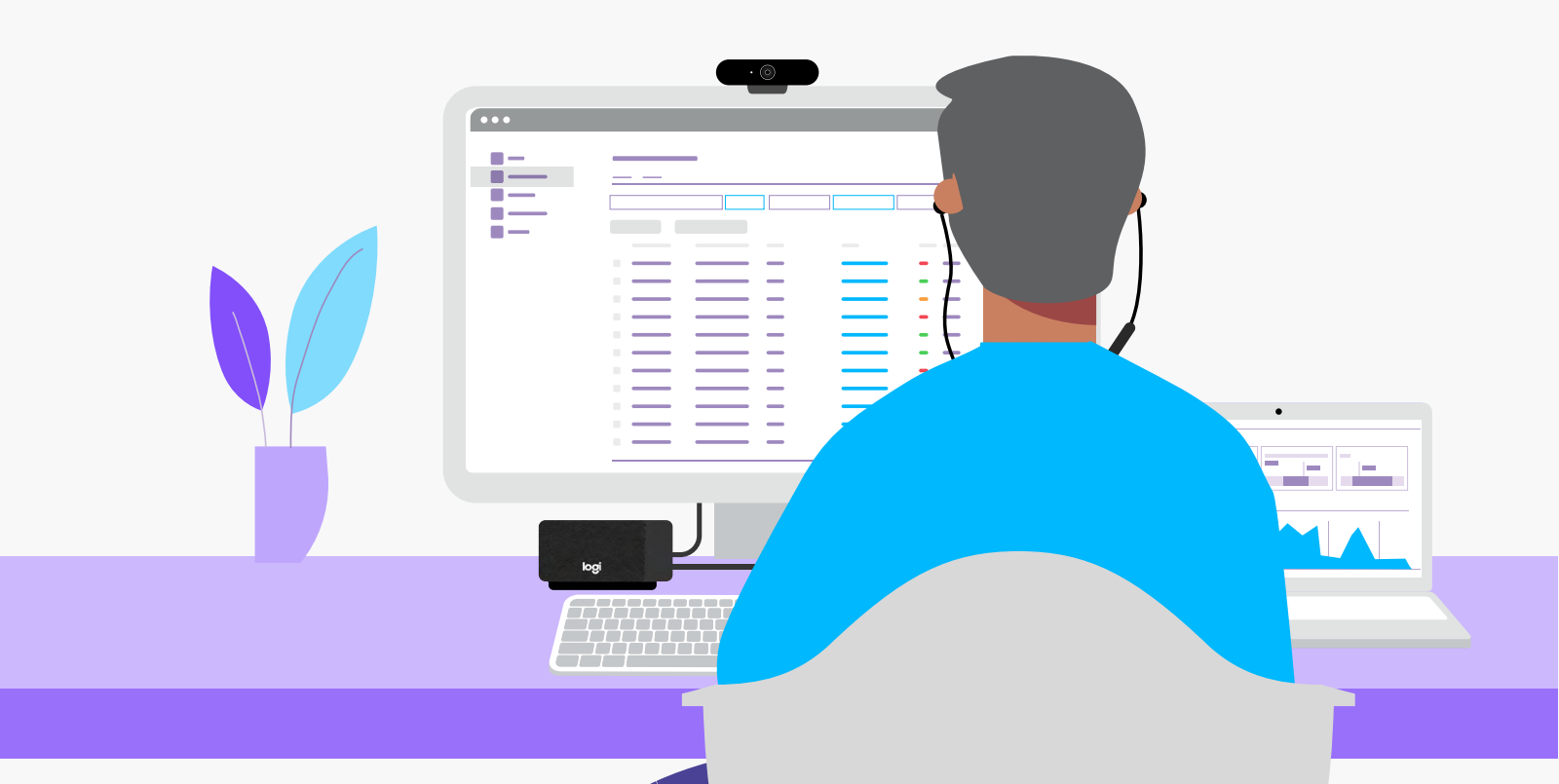
## MANAGEMENT MADE EASY

### MONITOR FROM ANYWHERE

**Logitech Sync** allows you to manage and keep track of devices, from installing firmware updates to enabling new features, all from the comfort of your own desk. **Save time for you and your staff** with notifications of issues in real-time, allowing you to resolve problems before they cause a major impact.

### REMEMBER

Every business needs focus to connect, work, and grow. Evaluating how personal collaboration equipment will fare throughout its entire lifecycle – is it easy to source, deploy, use, manage, and monitor? – is essential to **help teams perform at their best**, and make business tools easier to manage for IT.



**READY TO UPGRADE PERSONAL COLLABORATION FOR YOUR TEAMS?**